

Laying Hens Hy-Line W36 2016

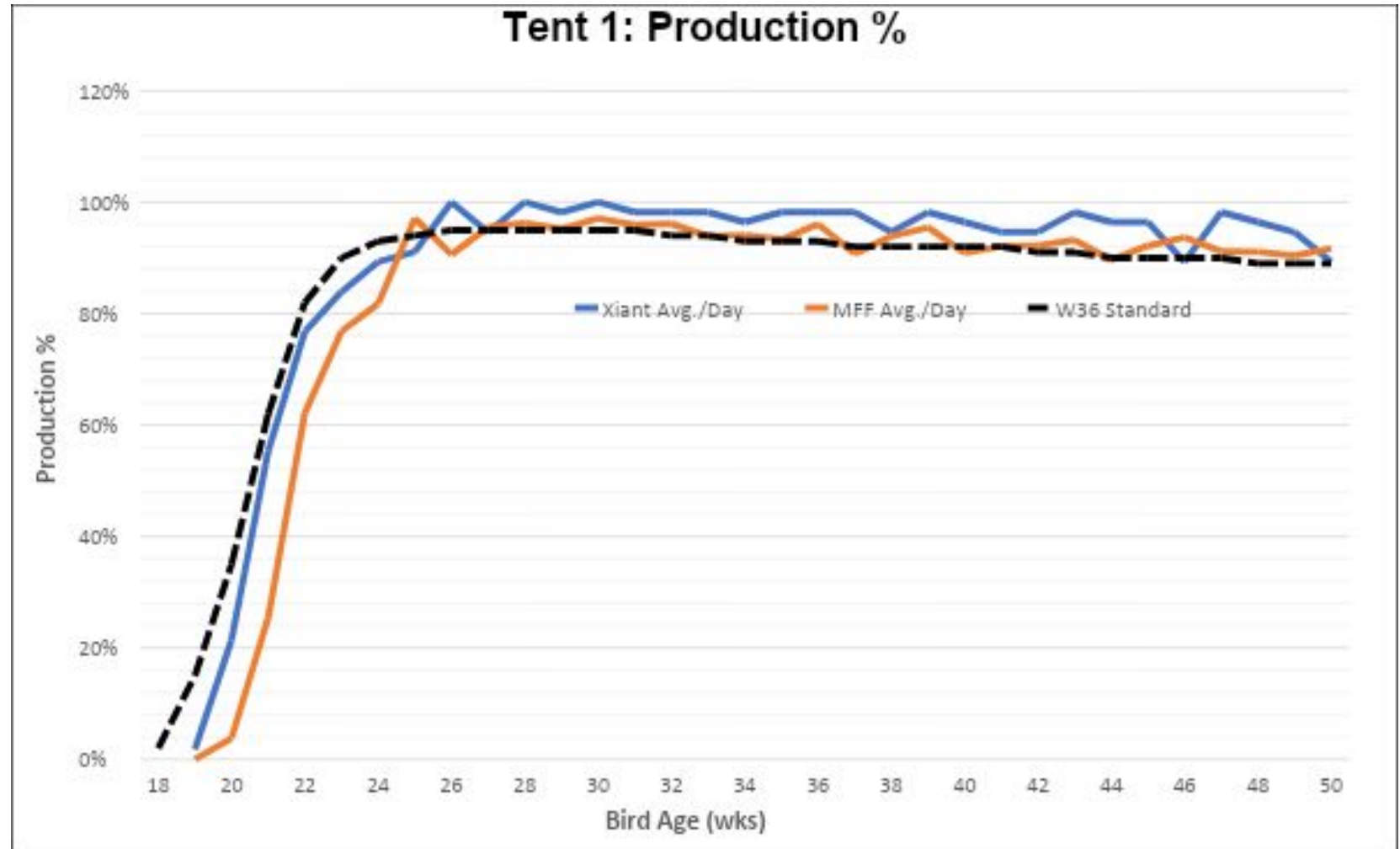
Birds: Hy-Line W36

Lighting:

XTI – 24hrs & Ramping Timer
Control – Ramping Timer

Feed: Ranchway Lay Hen 18%

- XTI birds had better production than both W36 breed standard and local poultry producer (MFF) under 24hr lighting



Laying Hens Hy-Line W36 2016

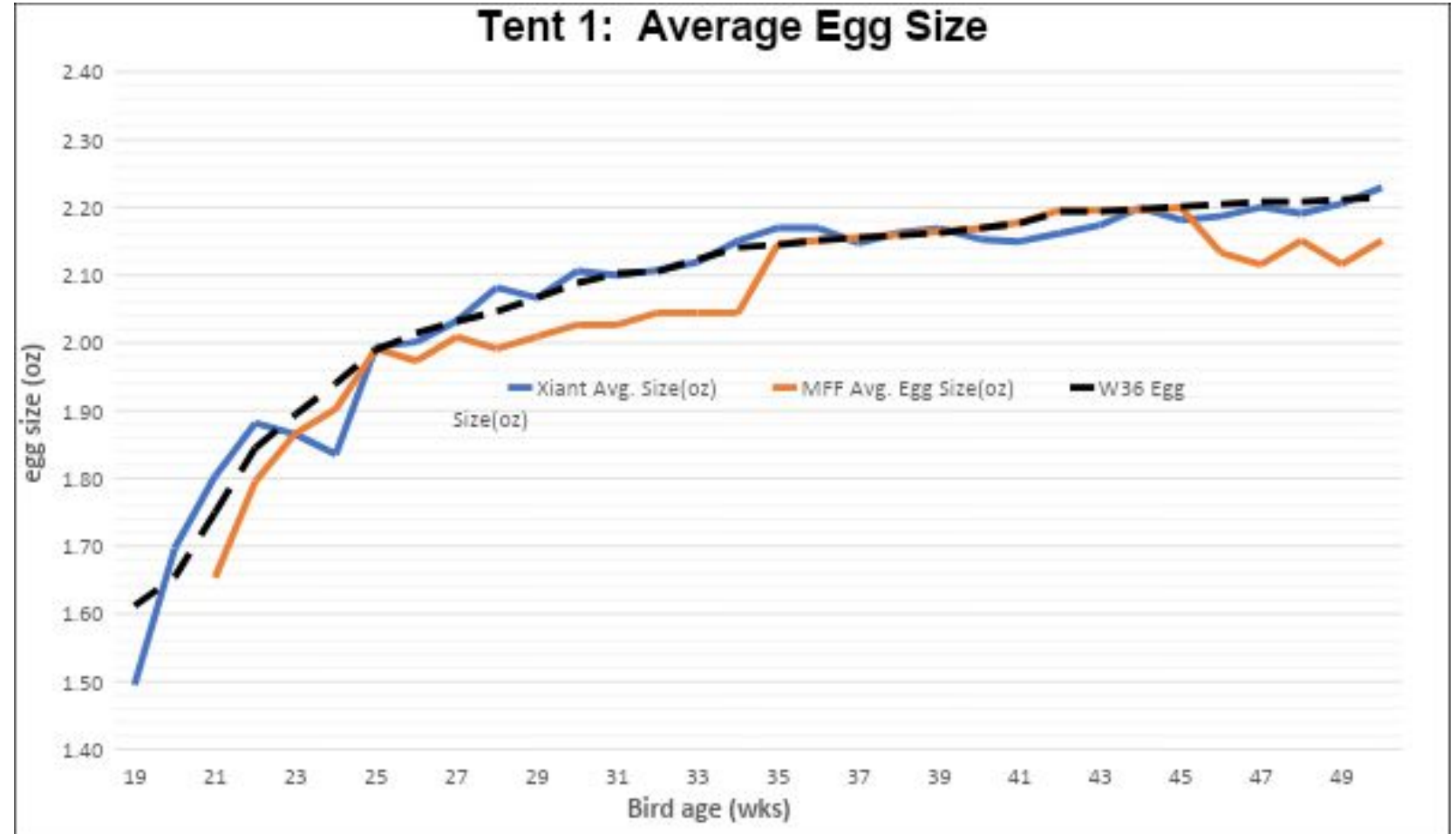
Birds: Hy-Line W36

Lighting:

XTI – 24hrs & Ramping Timer
Control – Ramping Timer

Feed: Ranchway Lay Hen 18%

- XTI birds were not inferior in regards to egg size compared to breed standard and local producer



Laying Hens Hy-Line W36 2016

Birds: Hy-Line W36

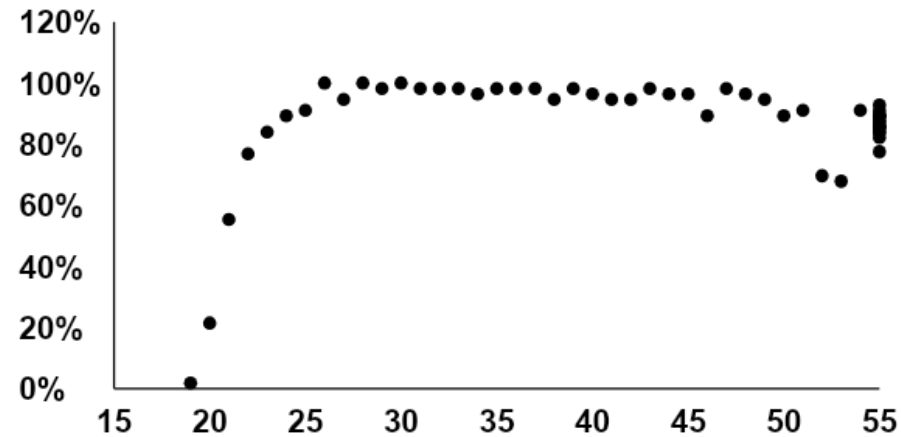
Lighting:

XTI – 24hrs & Ramping
Control – Ramping

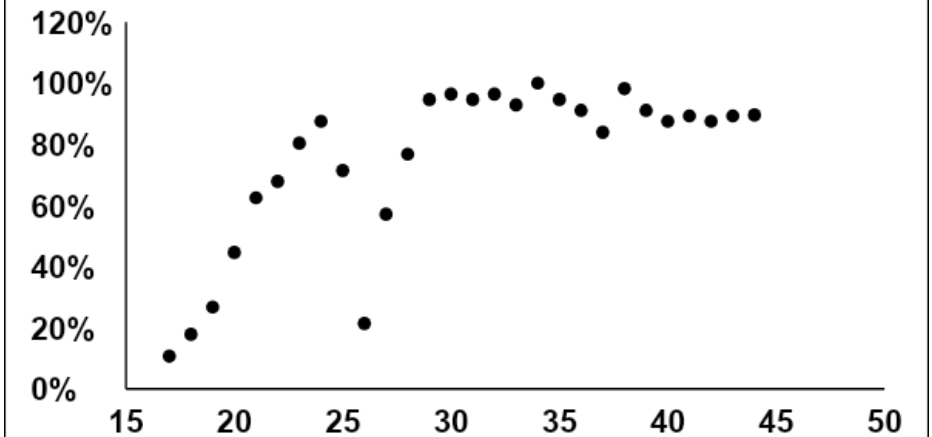
Feed: Ranchway Lay
Hen 18%

- XTI birds had early and sustained production. XTI birds also had higher case weights

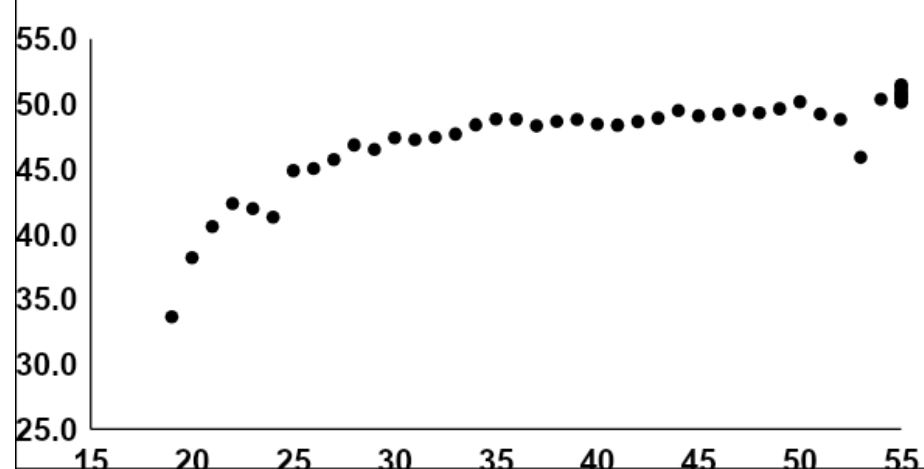
Poultry 1 24hrs Weekly Production



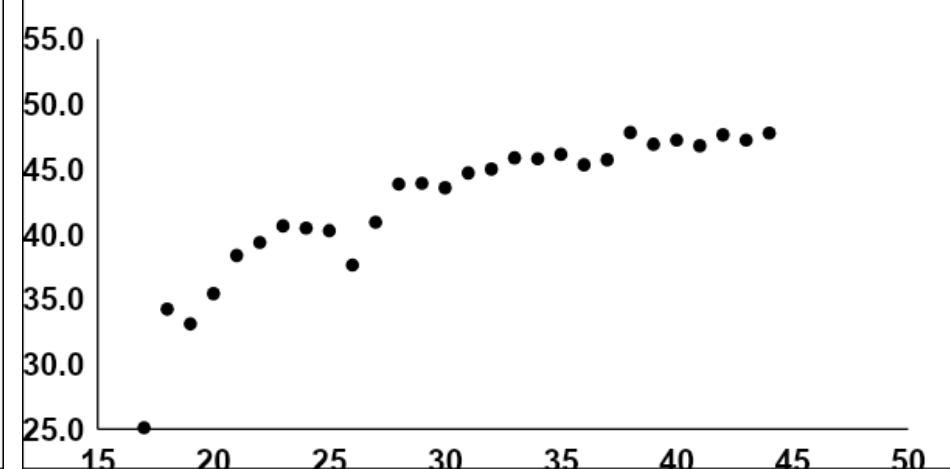
Control Weekly Production



Poultry 1 24hrs Weekly Case Weight



Control Weekly Case Weight



Laying Hens Hy-Line W36 2016

Birds: Hy-Line W36

Lighting: XTi – 24hrs &
Ramping Timer
Control – Ramping Timer

Feed: Ranchway Lay Hen
18%

- 24hr lighting produces larger eggs than 17hr lighting

